

Chassis:

high loader 1.800 kg (L: 5m, B: 1,7 m)
rubber spring axle

Tyres:

2 pieces 195/70 R13C, load capacity each 900 kg

Brake:

braking axle SB18

Feeder:

cubage: 1 m³
loading height: 2.000 mm
loading length: 2.350 mm

Feeding belt:

belt width: 650 mm
belt length: 2.000 mm
belt type: smoother belt
belt speed: dispatchable

Single trommel:

surface: 3 m² (outer screening)
diameter: 900 mm
length: 1.500 mm
speed: 18 U/min

Trommel drive:

drive: smooth start, not adjustable
direct over belt pulleys

Transmission:

positive locking

Cleaning brush:

350 mm diameter, self regular

Conveyor belt fine product:

belt width: 800 mm
belt type: smooth belt, mechanic fold-away
drop off side: left
drop off height: 1.400 mm
profiled belt: Possible

Power:

electric drive (16A): power input approx. 5 kW
(6,5 kVA) (standard)
Optional Petrol power generator (not included)
Prime power: 3,0 kW
Tank capacity: 30l
Weight: 90 kg
Measures: 786 x 570 x 600 mm
For MS 1000 without additional electrical load

Hitch:

one hitch including, removable
trailer hitch ball Ø 50 mm according ISO 24347
drawbar eye Ø 40 mm according ISO 8755

Measure:

Transportation
length: 4.800 mm
width: 1.900 mm
height: 2.200 mm

Service

length: 4.800 mm
width: 2.900 mm
height: 2.200 mm

Capacity feeding:

5 - 20 cbm/hour, depending on condition of material

2 Products:

1st fraction: 2 - 80 mm, on demand
2nd fraction: up to a maximum 200 mm (standard)

Colour / Coats:

single-layer
silo, engine cover and side covers: RAL 6001 green
Chassis RAL7022 umbra grey
screening drum: grey
conveyor belt frame: hot galvanized

Screen material:

sand, saw dust, wood chips, compost, soil, glass, coal and cinder, construction waste and recycling materials, stones and gravel sand with grain size 2 - 80 mm

Weight:

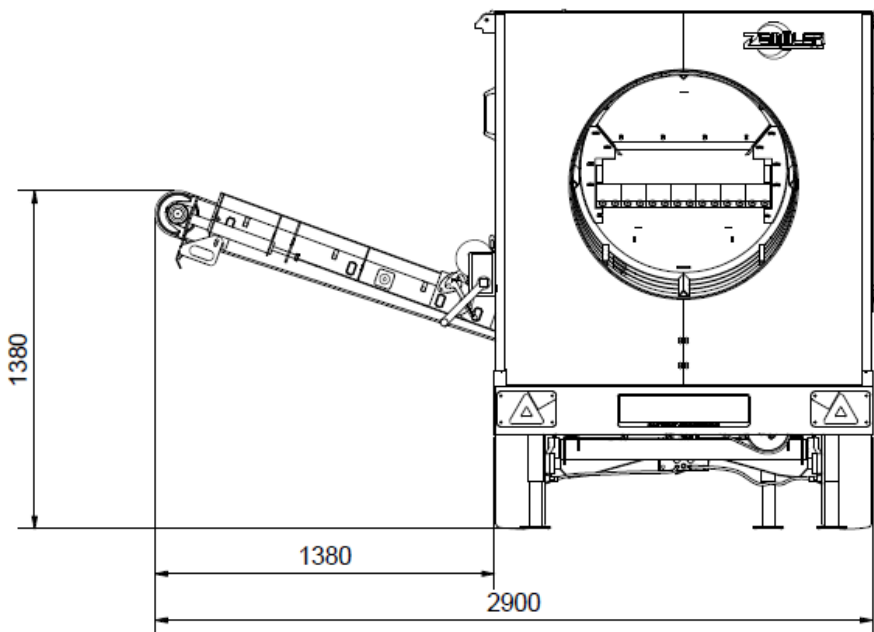
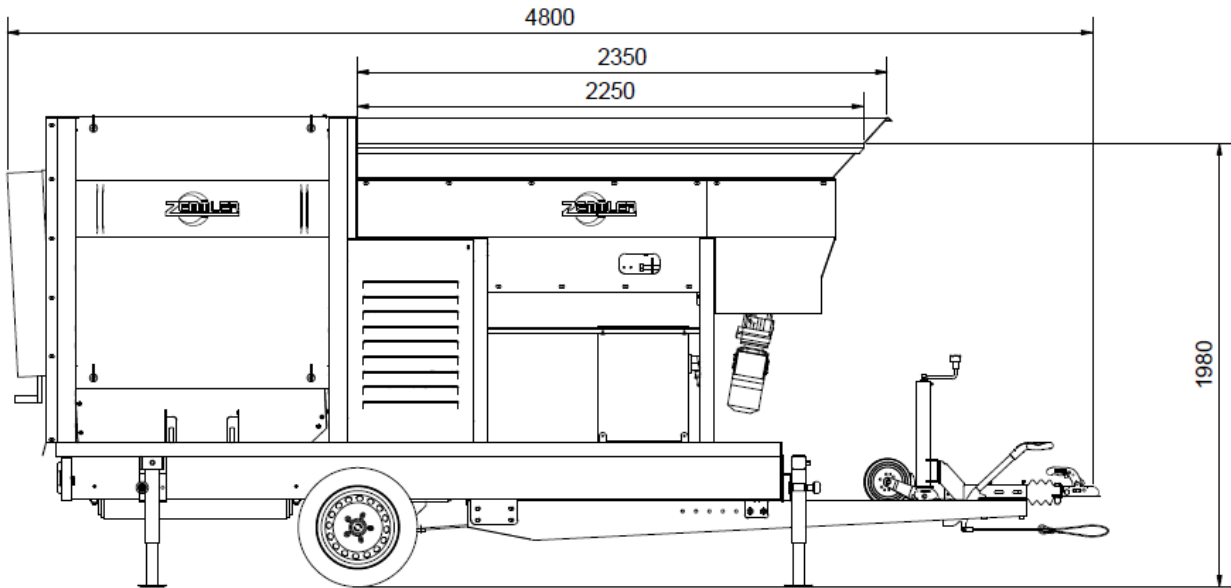
maximum 1.800 kg



All details are subject to technical modifications and future developments.

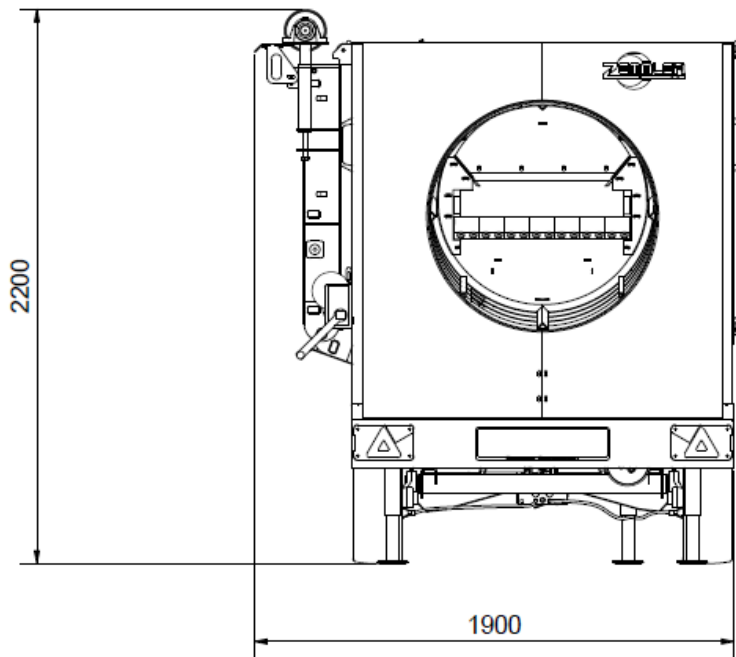
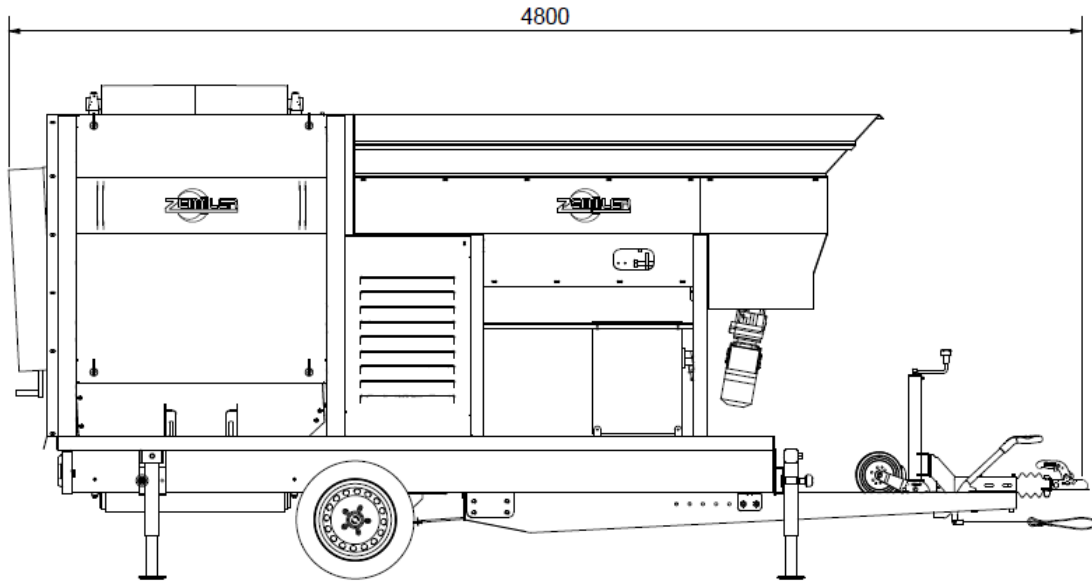
Further transfer and any kind of publication is permitted only with written approval of the Zemmler Siebanlagen GmbH.

ZEMMLER® MULTI SCREEN® MS 1000 • Standard equipped



All details are subject to technical modifications and future developments.
Further transfer and any kind of publication is permitted only with written approval of the Zemmler Siebanlagen GmbH.

ZEMMLER® MULTI SCREEN® MS 1000 • Transportation



**All details are subject to technical modifications and future developments.
Further transfer and any kind of publication is permitted only with written approval of the Zemmler Siebanlagen GmbH.**