



TAKE A BIGGER PIECE OF THE PIE

RANGER DXI SERIES



OUR EXPERTISE YOUR PRODUCTIVITY

Throughout more than 50 years pioneering drilling solutions, we've developed extensive expertise in helping you overcome the challenges posed by your toughest operating conditions. That expertise is engineered into

our new Ranger DXi series surface rigs. Boost your productivity and minimize your production costs – choose the feature-filled Ranger DX800i and Ranger DX900i.

Ranger DXi rigs deliver superior coverage of 290 degrees, equaling

55 m².

Sandvik RD920 series rock drills provide percussion power up to

27 kW.

TAKE A BIGGER PIECE OF THE PIE

The new Ranger DX900i is the flagship model of our new Ranger DXi family. Featuring the most powerful rock drill in its class, Sandvik intelligence features and a counterweight, revolving superstructure enabling

ultimate stability, Ranger DX900i characterizes our revolutionary generation of Ranger DXi top hammer surface drill rigs. With an ultimate drilling coverage of 290° (55 m²), it is the most powerful and efficient rig in its class.



TECHNICAL DATA	RANGER DX800i	RANGER DX900i
Hole diameter	64–127* mm (3"–5")	89–140** mm (3½"–5½")
Sandvik rock drill	RD925M, RD925M-C, RD921S, RD921S-C	RD927L, RD927L-C
Percussion output power	25kW, 21kW, 33.5 hp, 28 hp	27kW, 36 hp
Rock tools	38 mm, 45 mm and 51 mm (1½", 1¾" and 2")	51 mm and 60 mm (2" and 2¾")
Drilling coverage	55 m ² (592 ft ²)	55 m ² (592 ft ²)
Engine type	Volvo TAD851VE T3/Volvo TAD871VE T4	TAD852VE T3/Volvo TAD872VE T4
Engine output	185kW, 248 hp	210kW, 282 hp
Cabin type	iCab	iCab
Control system type	Sandvik SICA, PLC-controlled proportional electrohydraulics	Sandvik SICA, PLC-controlled proportional electrohydraulics
Tramming/boom/drilling control	PLC controlled	PLC controlled
Flushing air	8.5 m ³ /min, up to 10 bar, 300 cfm	9.5 m ³ /min, up to 10 bar, 335 cfm
Total weight	19,600 kg, 43,210 lb	19,600 kg, 43,210 lb

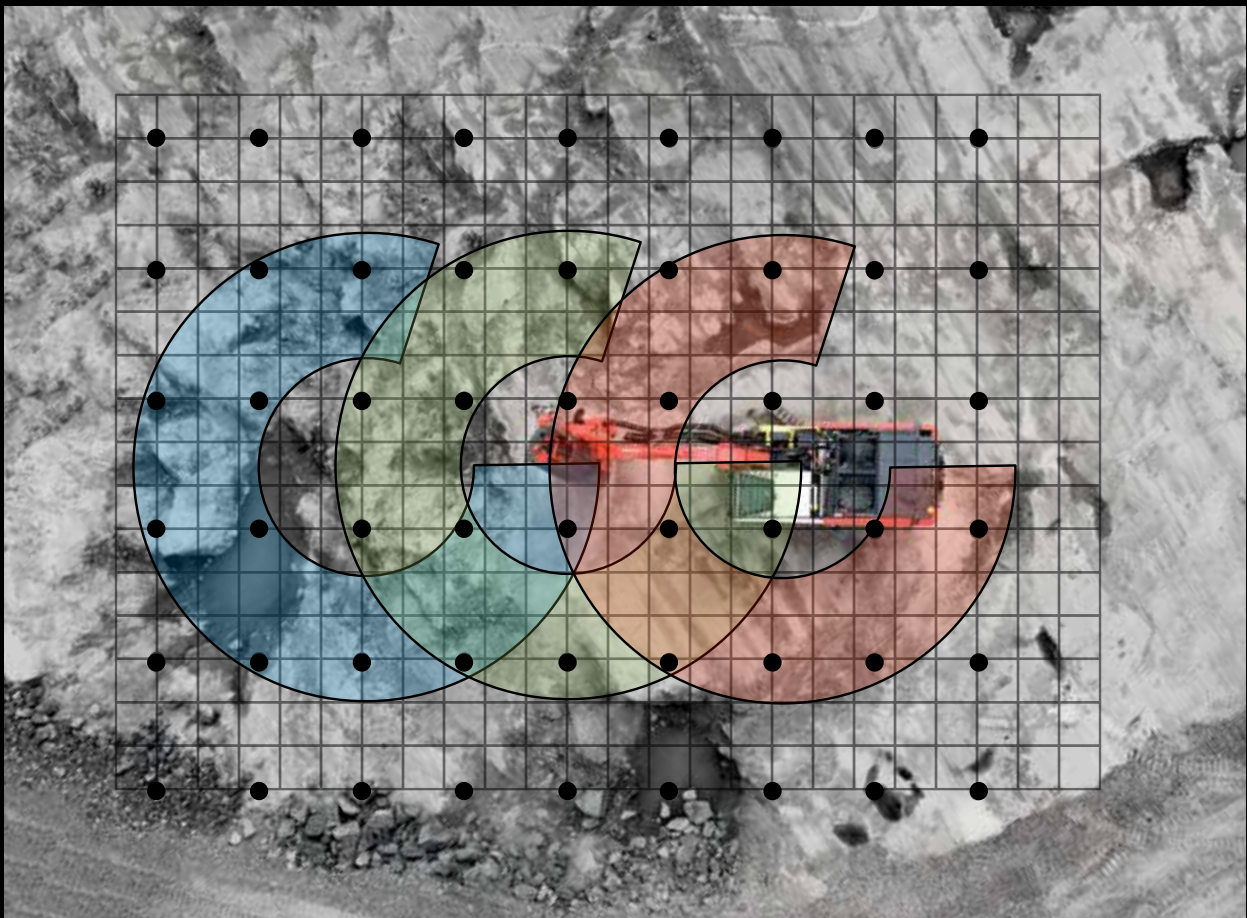
*Please contact your Sandvik representative for hole needs larger than 115 millimeters.

**Please contact your Sandvik representative for hole needs larger than 127 millimeters.

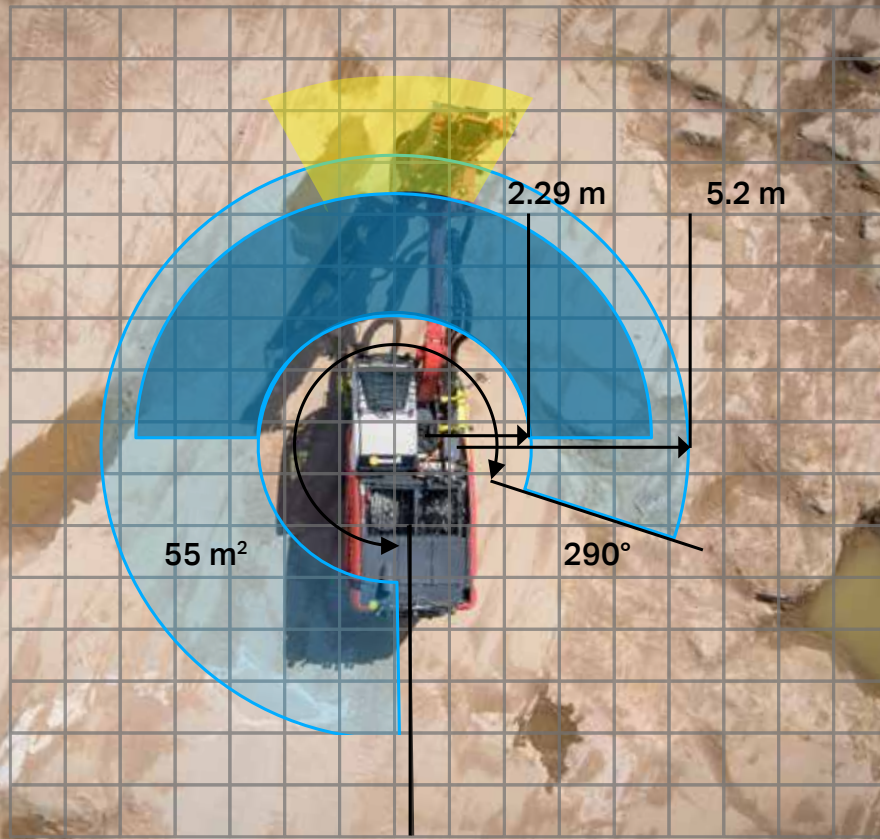
MORE HOLES PER SET-UP

All the Ranger DXi-series top hammer surface drill rigs feature a revolving superstructure. Thanks to its 290-degree reach enabling drilling coverage of 55 square meters, you'll save time and minimize the need to reposition your rig. Despite the rig's ability to rotate, its counterweight structure ensures stability by maintaining weight opposite the boom. Ranger DXi rigs are extremely mobile, thanks to a low center of gravity and high tramming power.

Superior drilling coverage reduces tramming need and enables up to **60 minutes more** drilling per shift.*



*Test results and calculations are to be considered as results reached under certain and controlled conditions. These test results and calculations should not be treated as specifications and Sandvik does not guarantee, warrant or represent the outcome of test results or calculations in any or all circumstances.



Ranger DXi rigs deliver more coverage in vertical up-hill drilling

+35 %

Vertical drilling
Collaring height





Sandvik iCab reduces
the noise level to

73,5 dB*

*measured with 160 bar percussion pressure, fan speed full.



ENJOY THE SILENCE IN SANDVIK iCAB

Our latest DXi rigs introduce the new Sandvik iCab, which has been designed to improve operator ergonomics and minimize noise levels. The cabin's new user interface, featuring easy-to-use joysticks and control panels, has been developed based on feedback from customer trials. The new spacious Sandvik iCab also has room for a trainer behind the operator seat. Through our extensive cooperation with VTT Technical

Research Centre of Finland Ltd, we have reduced the noise level inside the cabin to a quiet 73,5 dB.

Safety is always our top priority at Sandvik, and the new cabin is no exception. In addition to top of the line features to protect operators and maintenance personnel, the cabin is designed to provide a clear and unobstructed view of the drilling area, further improving overall operation safety.

Control system

<input checked="" type="checkbox"/>	User interface	Touchscreen, all parameters can be adjusted from cabin.
<input checked="" type="checkbox"/>	One hole automatics/ Full cycle automatics (option)	Automatic drilling to preset depth, coupling and uncoupling automatics.
<input checked="" type="checkbox"/>	Sandvik iTorque	Drilling control system, different drilling recipes for different rock conditions.
<input checked="" type="checkbox"/>	Troubleshooting functions	Easy to use flow chart type of troubleshooting features for all system functions.
<input checked="" type="checkbox"/>	Automatic aligning (option)	Faster and more accurate hole to hole setup.
<input checked="" type="checkbox"/>	Radio control (option)	Full radio drilling for boom, tramming and drilling control.
<input checked="" type="checkbox"/>	Two tramming modes	One-joystick or two-finger joystick tramming, maximum tramming speed adjustable.

MOST POWERFUL ROCK DRILL FAMILY IN ITS CLASS

Boost your surface drilling performance with our new rock drill family. We've developed a trio of Sandvik RD920 series rock drills for different rock tools and hole sizes. These ideal matches will improve your drilling power, increase your productivity and reduce your costs.

SANDVIK RD921SC

Our smallest rock drill is designed for Sandvik T45 rock tools and 64–89 mm hole sizes. The powerful RD921SC rock drill has a high 71 Hz frequency and delivers excellent hole quality and long tool life despite its high power.

SANDVIK RD925MC

Our medium-sized rock drill is designed for Sandvik T51 rock tools and 89–115 mm hole sizes. This version delivers a high 69 Hz frequency with 25 kW power.

SANDVIK RD927LC

The largest in our new family, Sandvik RD927LC is an ideal match for Sandvik GT60 rock tools and 92–127 mm hole sizes. This option improves hole quality in larger holes and extends tool life with maximum drilling power.

All three new rock drill models can accommodate an optional CSL system, which minimizes lubrication oil consumption and costs by re-circulating and re-using oil. With the CSL system, you can reduce your oil consumption by 300 g per hour.



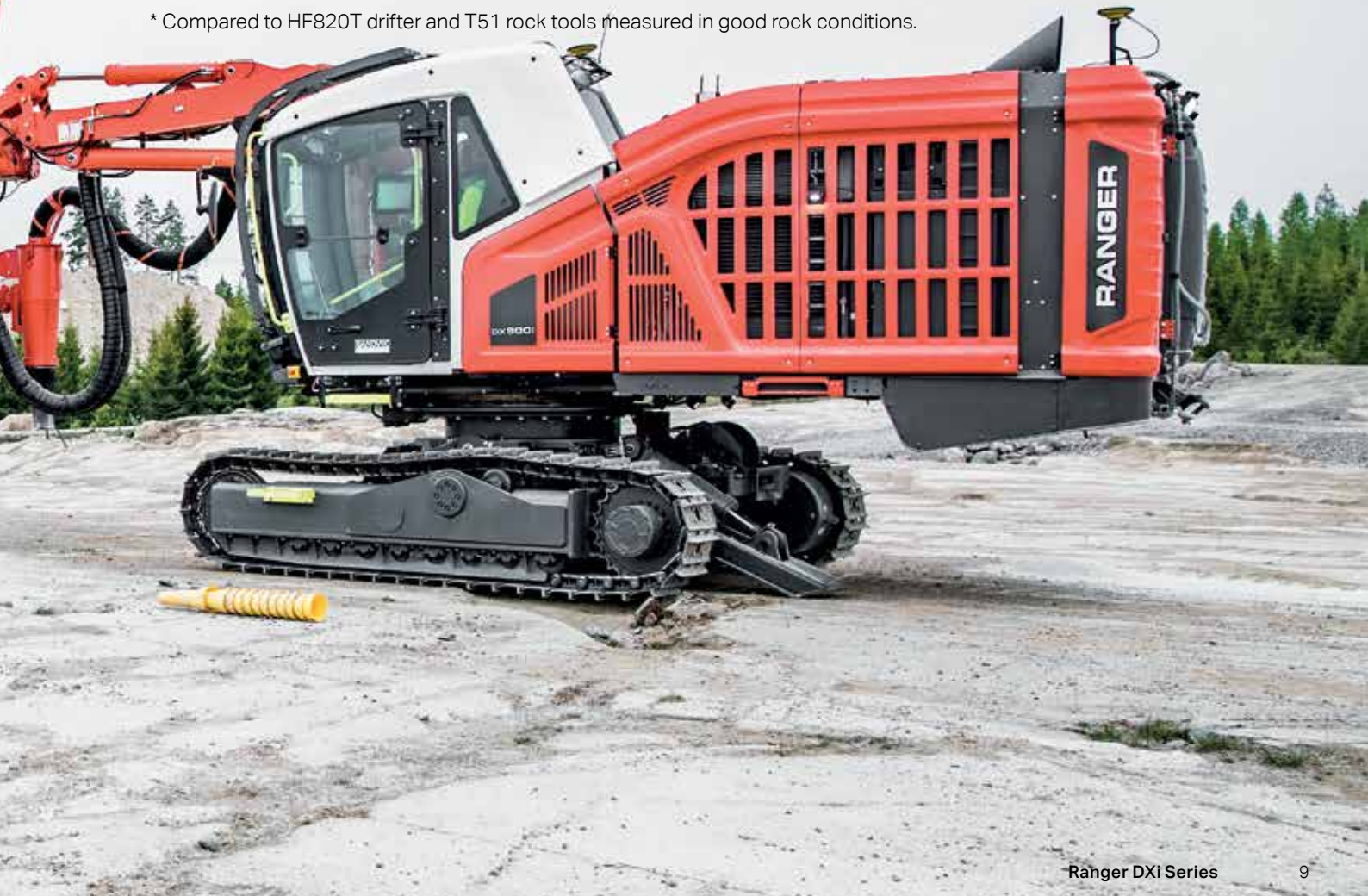
HYDRAULIC ROCK DRILL

Sandvik rock drill	RD921S, RD921S-C	RD925M, RD925M-C,	RD927L, RD927L-C
Hole range	64–89 mm, (2½"–3½")	76–127 mm (3"–5")	89–140 mm (3½"–5½")
Optimum hole range	76–89 mm (3"–3½")	89–115 mm (3½"–4½")	92–127 mm (3⅝"–5")
Rock tools	38, 45, 51 mm (1½", 1¾", 2")	45, 51 mm (1¾", 2")	51, 60 mm (2", 2⅝")
Operating pressure	100–200 bar	100–200 bar	100–200 bar
Percussion rate	71 Hz	69 Hz	56 Hz
Percussion output power	21kW, 28 hp	25kW, 33.5 hp	27kW, 36 hp
Maximum rotation torque	1,750 Nm	1,750 Nm	1,750 Nm
Rotation motor	OMT 250/315	OMT 315/400	OMT 400/500
Shank lubrication	SLU/CSL Air/oil mist	SLU/CSL Air/oil mist	SLU/CSL Air/oil mist
Flushing	Air	Air	Air
Weight	345 kg, 760 lb	345 kg, 760 lb	345 kg, 760 lb

Sandvik GT60 rock tools enable faster drilling and improve quality in 92–127 mm holes

+20 %*

* Compared to HF820T drifter and T51 rock tools measured in good rock conditions.



Surface model and drilling plan can now be used concurrently in Sandvik TIM3D software.



Sandvik TIM3D system

- Sandvik TIM3D hole navigation system (option)
Fast and accurate drilling navigation and improved drilling result. Accuracy +/- 10 centimeters/4 inches. Surface model and drilling plan can be used concurrently.
- Driller's notes (option)
Measurement-While-Drilling (MWD) option can collect data during drilling.
- SanRemo Premium (option)
Wireless data transfer.
- Driller's office (option)
Fast and easy drilling plan creation and MWD data analyzing.

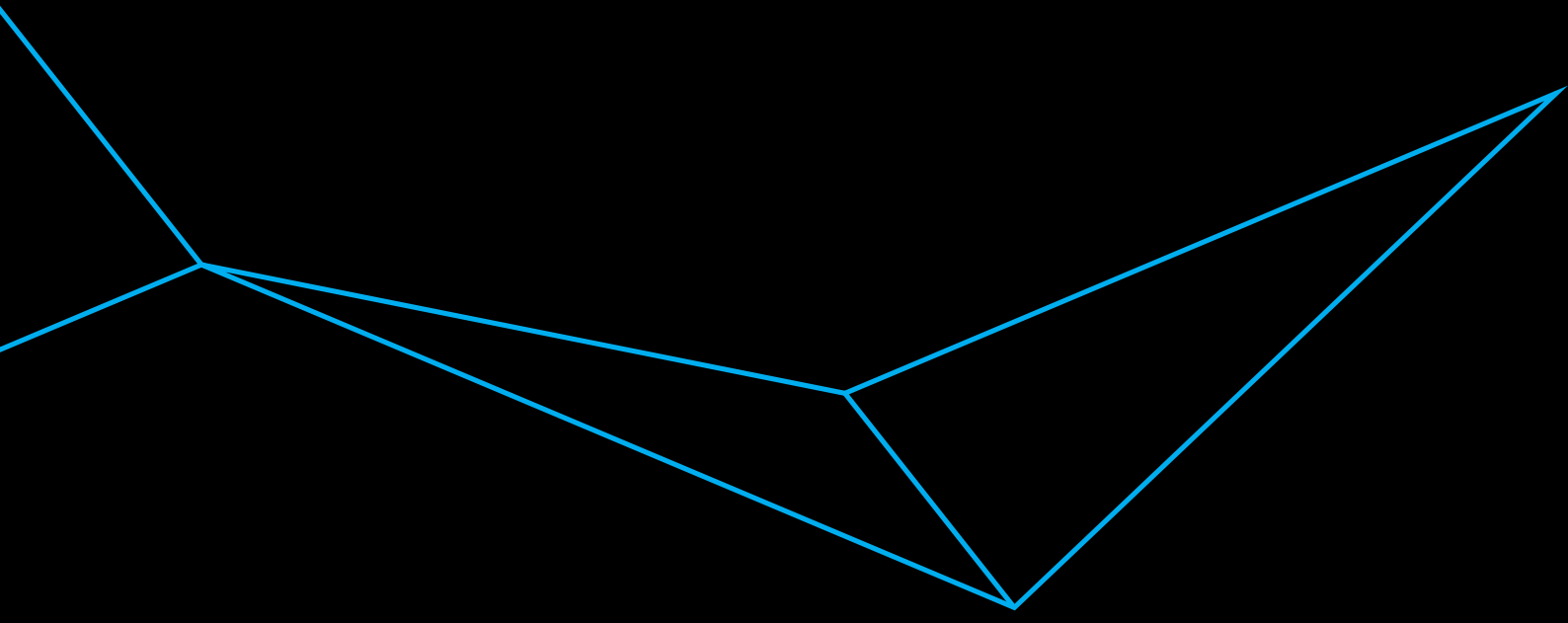
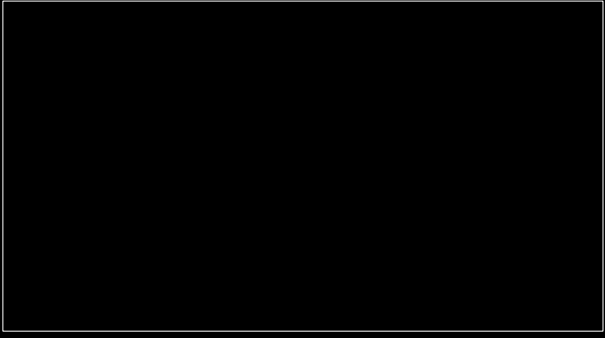
THE BEAUTY OF ENGINEERING AND INDUSTRIAL DESIGN

The Ranger DXi top hammer surface drill rig family is engineered to help you achieve more meters per hour with the highest fuel efficiency.

Ranger DXi series rigs can be optimized to meet your unique needs. Get in touch with Sandvik and we'll help you determine the ideal match for your operations.

For more information on Ranger DXi series drill rigs and contact details, please visit CONSTRUCTION.SANDVIK.COM.





B2-2035ENG © SANDVIK AB 2017. Sandvik is a trademark owned by Sandvik Intellectual Property AB in Sweden and other countries. Grano 2017. Note: machines shown in pictures may be equipped with options.