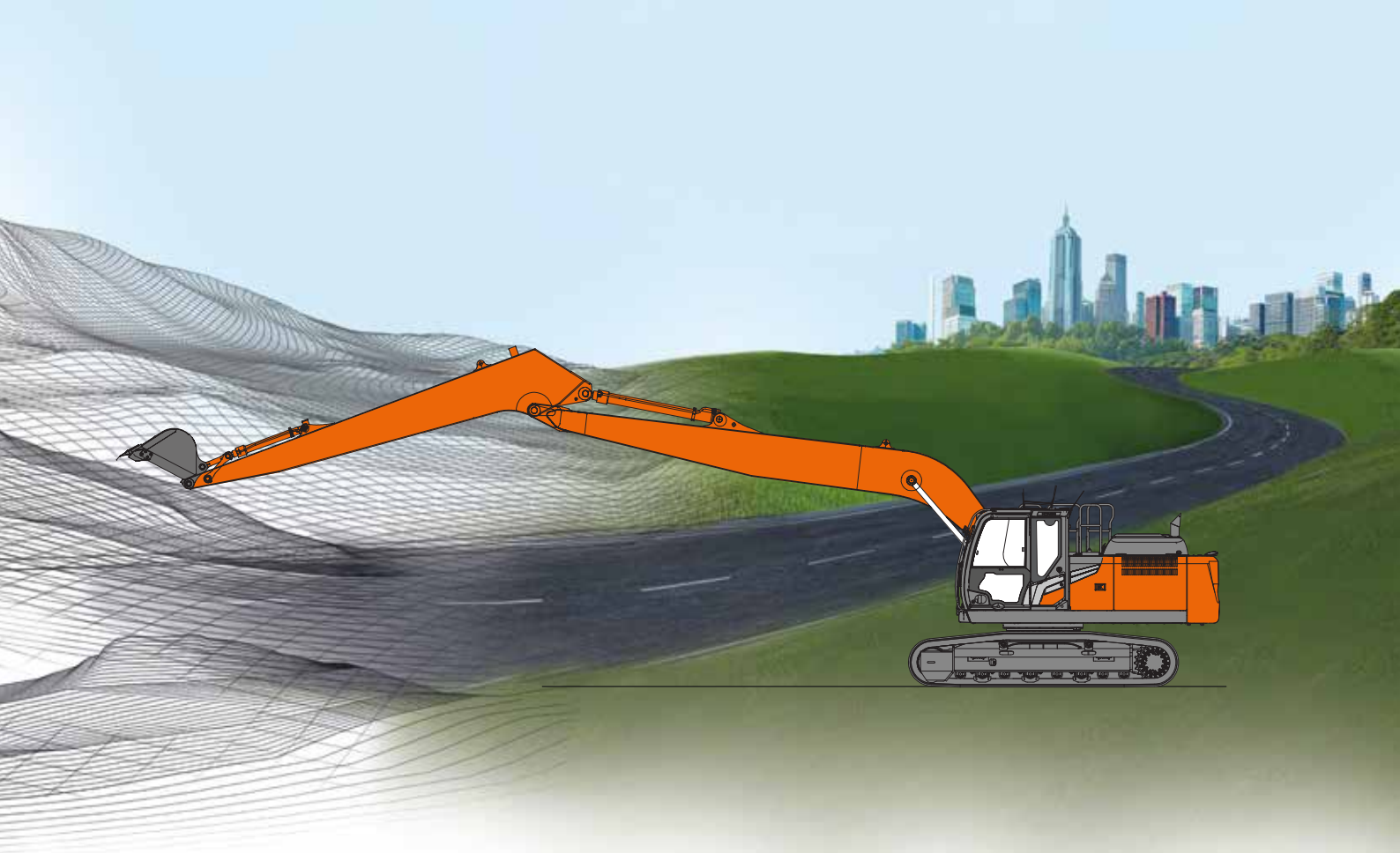


SUPER LONG FRONT

A P P L I C A T I O N & A T T A C H M E N T



ZAXIS210_{LC}

Model Code	ZX210LC-7
Engine Rated Power	128.4 kW
Operating Weight	24 600 - 25 500 kg

SPECIFICATIONS

ZX210LC TYPE HE15LD SUPER LONG FRONT

ENGINE

Model	Isuzu 4HK1
Type	4-cycle water-cooled, common rail direct injection
Aspiration	Variable geometry turbocharged, intercooled, cooled EGR
Aftertreatment	DOC+CSF+SCR system
No. of cylinders	4
Rated power	
ISO 14396	128.4 kW at 2 000 min ⁻¹ (rpm)
ISO 9249 : 2007	122 kW at 2 000 min ⁻¹ (rpm)
Maximum torque	670 Nm at 1 600 min ⁻¹ (rpm)
Piston displacement	5.193 L
Bore and stroke	115 mm x 125 mm
Batteries	2 x 12 V / 126 Ah

HYDRAULIC SYSTEM

Hydraulic Pumps

Main pumps	3 variable displacement axial piston pumps
Maximum oil flow	2 x 212 L/min 1 x 184 L/min
Pilot pump	1 gear pump
Maximum oil flow	33.7 L/min

Hydraulic Motors

Travel	2 variable displacement axial piston motors
Swing	1 axial piston motor

Relief Valve Settings

Implement circuit	34.3 MPa
Swing circuit	27.8 MPa
Travel circuit	34.3 MPa
Pilot circuit	3.9 MPa
Power boost	38.0 MPa

Hydraulic Cylinders

	Quantity	Bore	Rod diameter
Boom	2	120 mm	85 mm
Arm	1	150 mm	105 mm
Bucket	1	100 mm	70 mm

UPPERSTRUCTURE

Revolving Frame

D-section frame for resistance to deformation.

Swing Device

Axial piston motor with planetary reduction gear is bathed in oil. Swing circle is single-row. Swing parking brake is spring-set/hydraulic-released disc type.

Swing speed	9.2 min ⁻¹ (rpm)
Swing torque	58 kNm

Operator's Cab

Independent spacious cab, conforming to ISO* Standards.
* International Organization for Standardization

UNDERCARRIAGE

Tracks

Tractor-type undercarriage. Welded track frame using selected materials. Side frame welded to track frame. Lubricated track rollers, idlers, and sprockets with floating seals.

Track shoes with triple grousers made of induction-hardened rolled alloy. Heat-treated connecting pins with dirt seals. Hydraulic (grease) track adjusters with shock-absorbing recoil springs.

Numbers of Rollers and Shoes on Each Side

Upper rollers	2
Lower rollers	8
Track shoes	49
Track guard	2

Travel Device

Each track driven by 2-speed axial piston motor. Parking brake is spring-set/hydraulic-released disc type. Automatic transmission system: High-Low.

Travel speeds	High : 0 to 5.3 km/h Low : 0 to 3.3 km/h
---------------------	---

Maximum traction force ... 203 kN

Gradeability

58% (30 degree) continuous

ENVIRONMENT

Sound level in cab according to ISO 6396 : 2008 LpA 70 dB(A)
External sound level according to ISO 6395 : 2008 and
EU Directive 2000/14/EC LwA 101 dB(A) / LwA 102 dB(A)

SERVICE REFILL CAPACITIES

Fuel tank	400.0 L
Engine coolant	28.0 L
Engine oil	23.0 L
Swing device	6.9 L
Travel device (each side)	6.8 L
Hydraulic system	240.0 L
Hydraulic oil tank	135.0 L
DEF/AdBlue® tank	57.0 L

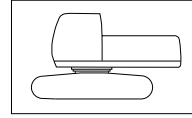
WEIGHTS AND GROUND PRESSURE

ZAXIS 210LC TYPE HE15LD SUPER LONG FRONT:

Equipped with 8.64 m monoblock boom, 5.85 m arm and 0.40 m³ bucket (SAE, PCSA heaped), 6 100 kg counterweight.

Shoe type	Shoe width	Operating weight	Ground pressure
Triple grouser	600 mm	24 600 kg	51 kPa (0.52 kgf/cm ²)
	700 mm	24 900 kg	44 kPa (0.45 kgf/cm ²)
	800 mm	25 200 kg	39 kPa (0.40 kgf/cm ²)
	900 mm	25 500 kg	35 kPa (0.36 kgf/cm ²)

Basic Machine Weight and Overall width



Excluding front end attachment, fuel, hydraulic oil and coolant etc. Including counterweight.

ZX210LC

Shoe width	Weight	Overall width
600 mm	20 100 kg	2 990 mm
700 mm	20 400 kg	3 090 mm
800 mm	20 700 kg	3 190 mm
900 mm	21 000 kg	3 290 mm

BUCKET SPECIFICATIONS AND COMPATIBILITY

ZX210LC

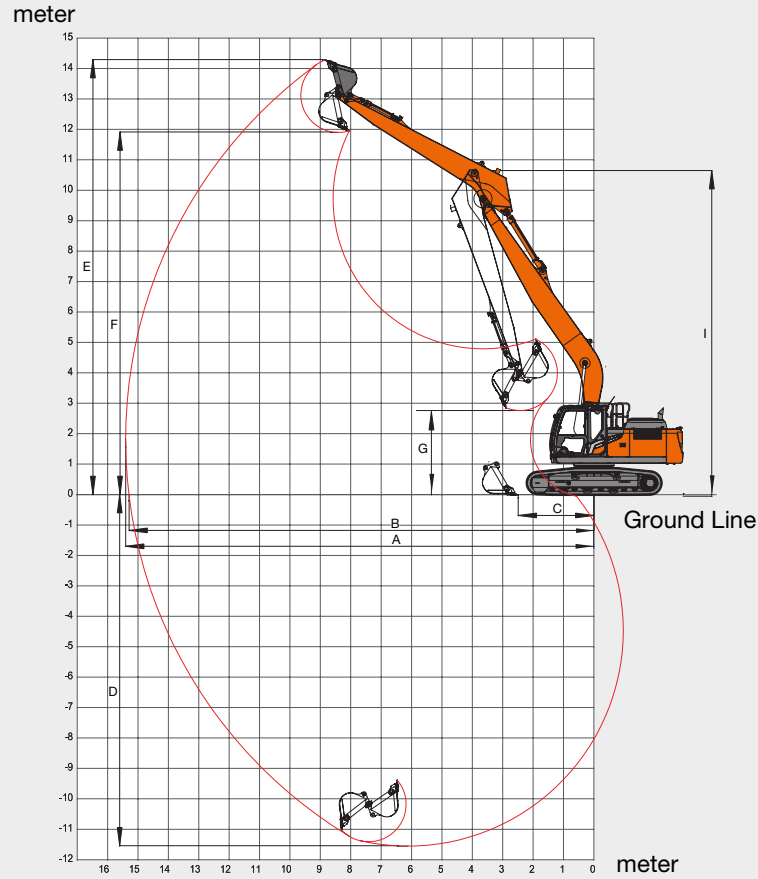
	Capacity ISO heaped	Width Without side cutters	Weight	Recommendation
				ZX210LC-7
				HE15LD
Bucket radius 1 060 mm	0.13 m ³	360 mm	140 kg	◎
	0.17 m ³	450 mm	170 kg	◎
	0.19 m ³	490 mm	180 kg	◎
	0.23 m ³	560 mm	190 kg	◎
	0.28 m ³	660 mm	210 kg	◎
	0.33 m ³	770 mm	230 kg	◎
Bucket radius 1 230 mm	0.40 m ³	720 mm	360 kg	◎
	0.45 m ³	800 mm	390 kg	○
	0.50 m ³	890 mm	410 kg	□
	0.59 m ³	950 mm	430 kg	□
	0.66 m ³	1 030 mm	430 kg	□
Slope finishing	-	1 500 mm	250 kg	x
	-	1 600 mm	430 kg	◇
Max. weight				1 170 kg

- ◎ Suitable for materials with density of 1 800 kg/m³ or less
- Suitable for materials with density of 1 600 kg/m³ or less
- Suitable for materials with density of 1 100 kg/m³ or less
- ◇ Slope-finishing service

SPECIFICATIONS

ZX210LC TYPE HE15LD SUPER LONG FRONT

WORKING RANGES

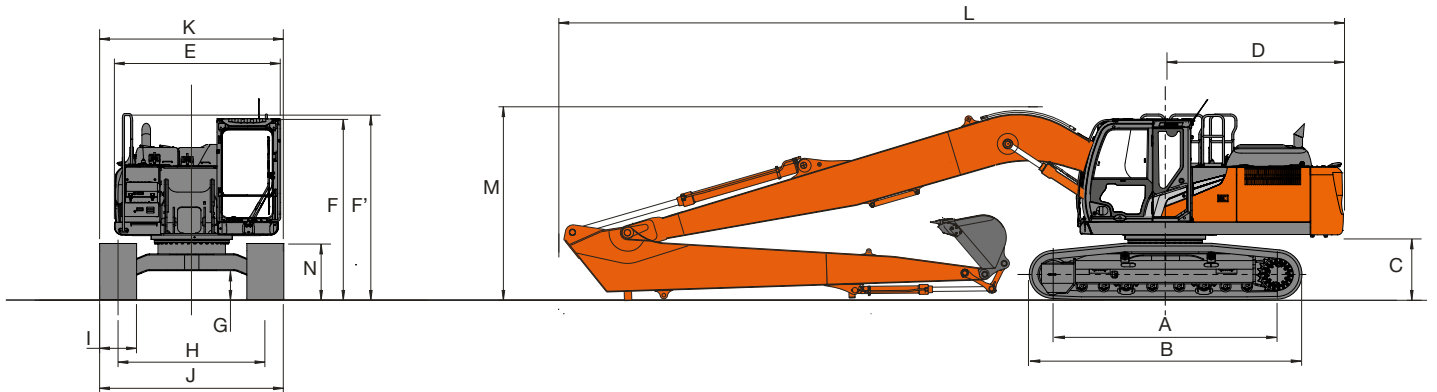


Unit: mm

	ZAXIS 210LC TYPE HE15LD
A Max. digging reach	15 400
B Max. digging reach (on ground)	15 290
C Min. level crowding distance	2 480
D Max. digging depth	11 540
E Max. cutting height	14 290
F Max. dumping height	11 910
G Min. dumping height	2 650
H Min. swing radius	4 710
I Min. swing radius height	10 700
Bucket digging force ISO	81 kN
Arm crowd force ISO	51 kN

- Excluding track shoe lug

DIMENSIONS



Unit: mm

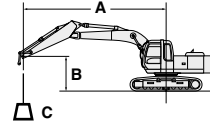
	ZAXIS 210LC TYPE HE15LD
A Distance between tumblers	3 660
B Undercarriage length	4 450
* C Counterweight clearance	990
D Rear-end swing radius	2 910
E Overall width of upperstructure	2 700
F Overall height of cab	2 950
F' Overall height of upperstructure	3 030
* G Min. ground clearance	450
H Track gauge	2 390
I Track shoe width	G 600 / G 700 / G 800 / G 900
J Undercarriage width	2 990 / 3 090 / 3 190 / 3 290
K Overall width	2 990 / 3 090 / 3 190 / 3 290
L Overall length	12 810
M Overall height of boom	3 150
N Track height with triple grouser shoes	900

* Excluding track shoe lug G: Triple grouser shoe

LIFTING CAPACITIES

Metric measure

- Notes:
1. Ratings are based on ISO 10567.
 2. Lifting capacity of the ZAXIS series does not exceed 75% of tipping load with the machine on firm, level ground or 87% full hydraulic capacity.
 3. The load point is the center-line of the bucket pivot mounting pin on the arm.
 4. * Indicates load limited by hydraulic capacity.
 5. 0m = Ground.
- For lifting capacities, subtract bucket and quick hitch weight from lifting capacities.



- A: Load radius
B: Load point height
C: Lifting capacity

ZAXIS 210LC HE15LD SUPER LONG FRONT



Rating over-front



Rating over-side or 360 degrees

Unit: kg

Conditions	Load point height m	Load radius m														
		3.0		4.5		6.0		7.5		9.0		10.5		12.0		
Boom 8.64 m Arm 5.85 m Counterweight 6 100 kg	13.5															
	12															
	10.5											1 690*	1 690*			
	9											1 650*	1 650*	1 670*	1 670*	
	7.5											1 700*	1 700*	1 660*	1 660*	
	6									1 930*	1 930*	1 800*	1 800*	1 710*	1 710*	
	4.5							2 460*	2 460*	2 150*	2 150*	1 800*	1 800*	1 710*	1 710*	
	3			5 050*	5 050*	3 600*	3 600*	2 850*	2 850*	2 400*	2 400*	2 110*	2 110*	1 900*	1 840	
	1.5			4 960*	4 960*	4 240*	4 240*	3 240*	3 240*	2 660*	2 660*	2 280*	2 280*	2 190	2 020*	1 760
	0 (Ground)	1 330*	1 330*	3 840*	3 840*	4 720*	4 490	3 580*	3 350	2 890*	2 610	2 430*	2 080	2 120*	1 690	
	-1.5	2 260*	2 260*	4 160*	4 160*	5 000*	4 280	3 810*	3 180	3 060*	2 490	2 560*	2 000	2 190*	1 640	
	-3	3 270*	3 270*	5 000*	5 000*	5 090*	4 210	3 920*	3 100	3 150*	2 420	2 620*	1 960	2 220*	1 620	
-4.5	4 380*	4 380*	6 180*	6 180*	5 000*	4 230	3 900*	3 100	3 150*	2 410	2 600*	1 950	2 150*	1 640		
-6	5 660*	5 660*	6 230*	6 230*	4 740*	4 330	3 740*	3 160	3 020*	2 460	2 450*	2 000				
-7.5	7 200*	7 200*	5 490*	5 490*	4 250*	4 250*	3 370*	3 280	2 690*	2 570	2 040*	2 040*				
-9	5 800*	5 800*	4 370*	4 370*	3 430*	3 430*	2 680*	2 680*	1 930*	1 930*						

Conditions	Load point height m	At max. reach				
		13.5		meter		
Boom 8.64 m Arm 5.85 m Counterweight 6 100 kg	13.5			1 760*	1 760*	9.7
	12			1 600*	1 600*	11.1
	10.5			1 530*	1 530*	12.1
	9			1 480*	1 480*	12.9
	7.5			1 490*	1 490*	13.5
	6	1 560*	1 520	1 500*	1 400	13.9
	4.5	1 710*	1 460	1 540*	1 330	14.1
	3	1 830*	1 420	1 600*	1 300	14.1
	1.5	1 880*	1 390	1 720*	1 300	14.0
	0 (Ground)	1 900*	1 370	1 850*	1 330	13.7
	-1.5			1 900*	1 410	13.3
	-3			1 950*	1 540	12.6
-4.5			1 980*	1 750	11.7	
-6			1 990*	1 990*	10.6	
-7.5			1 910*	1 910*	9.0	

EQUIPMENT

ENGINE	
Aftertreatment device	●
Air cleaner double filters	●
Alternator 60 A	●
Auto idle system	●
Auto shut-down control	●
Cartridge-type engine oil filter	●
Cartridge-type fuel main filter	●
Cold fuel resistance valve	●
ConSite OIL (sensor)*	●
DEF/AdBlue® tank inlet strainer and extension filler	●
DEF/AdBlue® tank	●
Dry-type air filter with evacuator valve (with air filter restriction indicator)	●
Dust-proof indoor net	●
ECO/PWR mode control	●
Electrical fuel feed pump	●
Engine oil drain coupler	●
Expansion tank	●
Fan guard	●
Fuel cooler	●
Fuel pre-filter with water separator	●
Isolation-mounted engine	●
Maintenance free pre-cleaner	○
Radiator, oil cooler and intercooler	●

HYDRAULIC SYSTEM	
Auto power lift	●
ConSite OIL (sensor)*	●
Control valve with main relief valve	●
High mesh full flow filter	●
Hose rupture valve for arm cilinder	●
Hose rupture valve for boom cylinder	●
Pilot filter	●
Power boost	●
Restriction indicator for full flow filter	○
Suction filter	●
Swing dampener valve	●
Two extra ports for control valve	●
Variable reliefvalve for breaker and crusher	●
Work mode selector	●

CAB	
All-weather sound suppressed steel cab	●
Auto control air conditioner	●
AUX function lever (breaker assist)	○
Bluetooth® integrated DAB+radio	●
Console height adjustment	●
Control lever auto-lock	●
CRES VII (center pillar reinforced structure) cab	●
Cab with P5A glass and roof wiper	○
Drink holder with hot and cool function	●
Electric double horn	●
Engine shut-off switch	●
Equipped with reinforced, tinted (green color) glass windows	●
Evacuation hammer	●
Floor mat	●
Footrest	●
Front window washer (2 points)	●
Glove compartment	●
Hands-free calling device	●
Hot and cool box	●
Intermittent windshield wipers	●
Key cylinder light	●
Laminated round glass window	○
LED room light	●
Magazine rack	●
OPG front guard Level II (ISO 10262 : 1998) compliant	○
OPG top guard Level I (ISO 10262 : 1998) compliant	●
OPG top guard Level II (ISO 10262 : 1998) compliant	○
Pilot shut-off lever	●
Power outlet 12 V and 24 V	●
Push button low idle	●
Rain guard (without OPG front guard)	●
Rear tray	●
Retractable seat belt	●
ROPS (ISO 12117-2 : 2008) compliant cab	●
Rubber radio antenna	●
Seat : air suspension seat with heater	●
Seat adjustment part : backrest, armrest, height and angle, slide forward / back	●
Seat belt reminder	●
Short wrist control levers	●
Sunscreen roller type (multi-use front or side and rear window)	○
Smartphone holder	●
Transparent roof with slide curtain	●
5V USB power supply	●
Wide view wiper	●
Windows on front, upper, lower and left side can be opened	●
2 speakers	●
4 fluid-filled elastic mounts	●
8 inch monitor	●

* Engine oil and hydraulic oil monitoring sensor.

● : Standard equipment ○ : Optional equipment — : Not applicable

MONITOR SYSTEM	
Alarms: overheat, engine warning, engine oil pressure, alternator, minimum fuel level, hydraulic filter restriction, air filter restriction, work mode, overload, SCR system trouble, etc	●
Alarm buzzers: overheat, engine oil pressure, overload, SCR system trouble, etc	●
Display of meters: water temperature, hour, fuel rate, clock, DEF/AdBlue® rate, etc	●
Other displays: work mode, auto-idle, glow, rearview monitor, operating conditions, etc	●
35 languages selection	●

LIGHTS	
Additional boom LED light with cover	○
Additional cab roof front LED lights	○
Additional cab roof rear LED light	○
LED lights for camera (side and rear view camera)	○
Rotating lamp	○
2 working LED lights	●

UPPER STRUCTURE	
Aerial Angle® (270-degree view camera system)	●
Batteries 2 x 126 Ah	●
Battery disconnect switch	●
Body top guardrail	—
Body top handrail	●
Counterweight 6 100 kg	●
Electric fuel refilling pump with auto stop and filter	●
Fuel level float	●
Hydraulic oil level gauge	●
Lockable fuel refilling cap	●
Lockable machine covers	●
Lockable tool box	●
Platform handrail	●
Side view mirror (right and left)	●
Skid-resistant plates	●
Swing parking brake	●
Undercover	●
Utility space	●

UNDERCARRIAGE	
Bolt-on sprocket	●
Greasing type track adjuster	●
Lockable tool box	—
Reinforced track links with pin seals	●
Shoe: 600 mm triple grouser	●
Shoe: 700, 800, 900 mm triple grouser	○
Towing hole for light weight object	●
Track undercover	●
Travel direction mark on track frame	●
Travel motor covers	●
Travel parking brake	●
Upper and lower rollers	●
2 track guards (each side)	●
3 track guards (each side)	○
4 tie down brackets	●

FRONT ATTACHMENTS	
Casted bucket link A	●
Centralized lubrication system	●
Dirt seal on all bucket pins	●
Flanged pin	●
HN bushing	●
Reinforced resin thrust plate	●
WC (tungsten-carbide) thermal spraying	●
Welded bucket link A	○
B-link (Heavy duty type)	○

ATTACHMENTS	
Accessories for 2 speed selector	○
Additional pump	○
Assist piping	○
Breaker and crusher piping	—
Pilot accumulator	●

MISCELLANEOUS	
ConSite	○
Global e-Service	●
Onboard information controller	●
Standard tool kit	●

Standard and optional equipment may vary by country, so please consult your Hitachi dealer for details.

Prior to operating this machine, including satellite communication system, in a country other than a country of its intended use, it may be necessary to make modifications to it so that it complies with the local regulatory standards (including safety standards) and legal requirements of that particular country. Please do not export or operate this machine outside the country of its intended use until such compliance has been confirmed. Please contact your Hitachi dealer in case of questions about compliance.

These specifications are subject to change without notice. Illustrations and photos show the standard models, and may or may not include optional equipment, accessories, and all standard equipment with some differences in color and features. Before use, read and understand the Operator's Manual for proper operation.