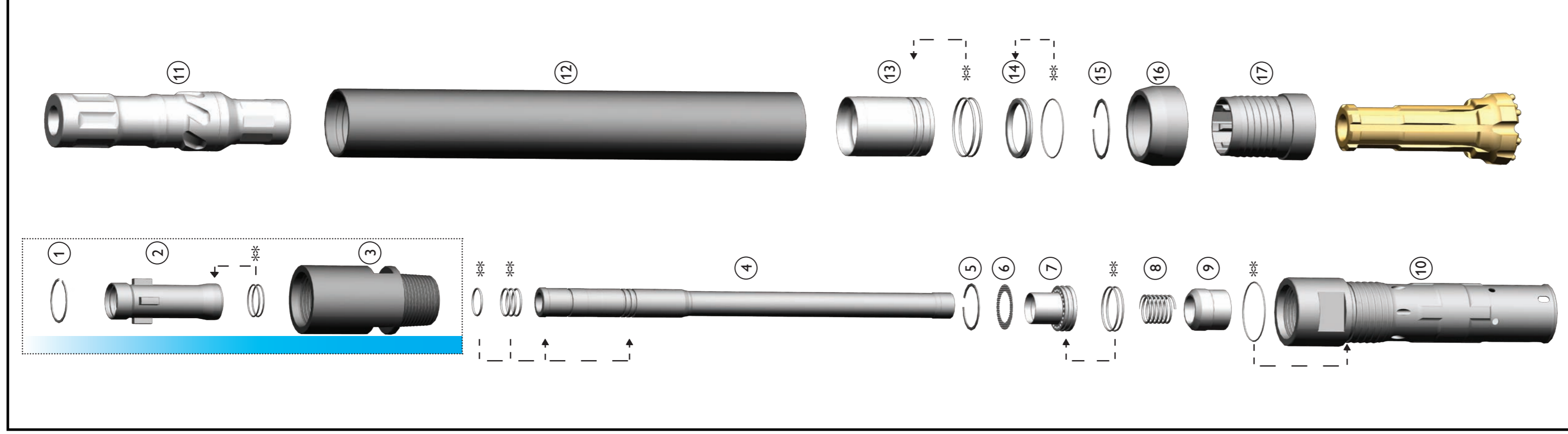


Hammer and parts details



Hammer Assemblies		
REF	PART No	PART DESCRIPTION
	32-547-R45	Hammer Assy 4.5in Remet
1	41-D1300-0900	Circlip
2	20-545-R45	Adaptor Tube 4.5in Remet
3	33-547-R45	Top Sub 4.5in Remet
	32-547-M45	Hammer Assy 4.5in Metzke
1	41-D1300-0850	Circlip
2	20-545-M45	Adaptor Tube 4.5in Metzke
3	33-547-M45	Top Sub 4.5in Metzke
	32-547R-M45	Hammer Assy 4.5in Metzke Retention
1	41-D1300-0850	Circlip
2	20-545-M45	Adaptor Tube 4.5in Metzke
3	33-547-M45	Top Sub 4.5in Metzke
	32-547R-R45	Hammer Assy 4.5in Remet Retention
1	41-D1300-0900	Circlip
2	20-545-R45	Adaptor Tube 4.5in Remet
3	33-547-R45	Top Sub 4.5in Remet

Parts List		
REF	PART No	PART DESCRIPTION
4	37-545-000	Sample Tube
4A	37-545-00V	Sample Tube Venturi
5	41-D1300-0850	Circlip
6	21-545-000	Airscreen
7	29-545-000	Distributor Nozzle
8	25-545-000	Plunger
9	22-545-000	Spring
10	31-547-000	Inner Cylinder
11	36-547-000	Piston
12	35-547-000	Piston Case
13	26-547-000	Bush Drive Sub
14	23-547-000	Piston Retaining Ring
15	27-547-000	Bit Retaining Ring
16	40-547-507	Shroud Hrdn 5-7/16in 138mm
16A	40-547R-507	Retention Option - Shroud Hrdn 5-7/16in 138mm
17	16-547-000	Drive Sub
17A	16-547R-000	Retention Option - Drive Sub
	38-547-000	Rubber Parts Kit (For Items 2, 4, 7, 8, 14, 15) **

** Rubber parts kit sold separately **

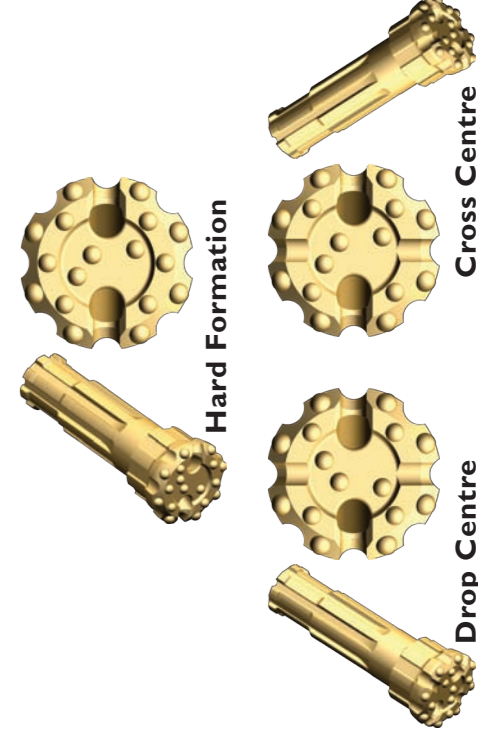
Bit and Shroud details

Bit assemblies include a hardened (non-coated) shroud 1/16in smaller than the bit diameter

Bit Assortment				
Bit Part No	Stock Code	Size (Inch)	Size (Mm)	Recommended Shroud
63-547-504CF	S	5-1/4in	133.4mm	40-[]-503
63-547-504HF	S	5-1/4in	133.4mm	40-[]-503
63-547-506CF	S	5-3/8in	136.5mm	40-[]-505
63-547-506DC	S	5-3/8in	136.5mm	40-[]-505
63-547-506HF	S	5-3/8in	136.5mm	40-[]-505
63-547-508CF	S	5-1/2in	139.7mm	40-[]-507
63-547-508DC	S	5-1/2in	139.7mm	40-[]-507
63-547-508HF	S	5-1/2in	139.7mm	40-[]-507
63-547-510CF	S	5-5/8in	143mm	40-[]-509
63-547-510DC	S	5-5/8in	143mm	40-[]-509
63-547-510HF	S	5-5/8in	143mm	40-[]-509
63-547-512CF	S	5-3/4in	146mm	40-[]-511
63-547-512DC	S	5-3/4in	146mm	40-[]-511
63-547-512HF	S	5-3/4in	146mm	40-[]-511
63-547-608	N	6-1/2in	165.1mm	40-[]-607
63-547-708	N	7-1/2in	190.5mm	40-[]-607

Metal Sprayed and Hardened Shroud Assortment

Metal Sprayed Shroud	Stock Code	Hardened Shroud	Stock Code	Size (Inch)	Size (Mm)
40-547M-501	N	40-547-501	S	5-1/16in	128.6mm
40-547M-503	N	40-547-503	S	5-3/16in	131.7mm
40-547M-504	N	40-547-504	S	5-1/4in	133.4mm
40-547M-505	N	40-547-505	S	5-5/16in	134.9mm
40-547M-506	N	40-547-506	S	5-3/8in	136.5mm
40-547M-507	N	40-547-507	S	5-7/16in	138.1mm
40-547M-509	N	40-547-509	S	5-9/16in	141.3mm
40-547M-511	N	40-547-511	S	5-11/16in	145.3mm
		40-547-607	N	6-7/16in	163.5mm
		40-547-707	N	7-7/16in	188.5mm



Retention Drill Bits

Bit Part No	Stock Code	Size (Inch)	Size (Mm)	Recommended Shroud
62-547R-506CF	S	5-3/8in	136.5mm	40-[]-505
62-547R-506HF	S	5-3/8in	136.5mm	40-[]-505
62-547R-508HF	S	5-1/2in	139.7mm	40-[]-507
62-547R-510CF	S	5-5/8in	143mm	40-[]-509
62-547R-510HF	S	5-5/8in	143mm	40-[]-509
62-547R-512CF	S	5-3/4in	146mm	40-[]-511
62-547R-512DC	S	5-3/4in	146mm	40-[]-511

Retention Shrouds

Shroud Part No	Stock Code	Size (Inch)	Size (Mm)
40-547RM-505	S	5-5/16in	134.9mm
40-547RM-507	S	5-7/16in	136.5mm
40-547RM-509	S	5-9/16in	138.1mm
40-547RM-511	S	5-11/16in	141.3mm

1. SAFE USE OF THIS PRODUCT

These are the primary generic hazards identified with the use of this product and the user should use this information as input to their own risk assessment / procedures reflecting the specific use the product is put to.

Personal Safety Measures

Take 5 minutes!

- >Plan, sequence and determine the resources required for each step of the job
- >Identify any hazards. A risk assessment using the Sandvik Risk Matrix or similar should be performed
- >Determine how to control the hazards identified and acquire the resources to do so

Doing a 'Take 5' every day is a quick and effective way to prevent incidents that can cause injury, property damage and can also improve the way a job is done

Stored Energy (Isolation)

Before stripping the hammer allow several minutes after ceasing operation for any compressed air trapped inside the hammer to dissipate

Always use correctly rated chain type breakout tools. Preferably operate breakout tools remotely

Take care when servicing the hammer or changing bits. Heavy internal parts can fall within from inside the hammer

Manual Handling

Beware of pinch points between the bit and the hammer shroud. The bit is a moving part - keep hands clear of this area if manual handling is necessary

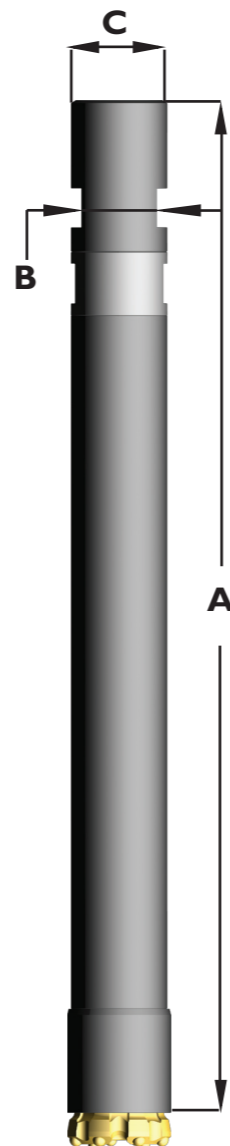
The hammer is cylindrical and very heavy. Make sure the hammer is stored safely to remove falling and rolling hazards

Use safe and proper lifting practices to avoid injuries

Always use a lifting bale and the rigs winch to remove and install an RC hammer

Emergency Response

Familiarize yourself with emergency stop switches and emergency response equipment. Always make sure you have a way of summoning help in an emergency



Bit Range

5 1/4in to 5 3/4in
133mm to 146mm

RE547		5 - 5 3/4 Inch	
PRESSURE	AIR CONSUMPTION		
psi	bar	cfm	m3/min
250	17.2	550	16.1
300	20.7	660	19.3
350	24.1	750	21.9
400	27.5	830	24.3
450	31.0	925	27.0
500	34.5	1030	30.1

Wear Limits	
FEATURE	SIZE
Piston Nose	82.45mm
Piston Large OD	107.7mm
Piston Back OD	98.23mm
Piston Seal ID	51.82mm
Inner Cylinder ID	98.56mm
Piston Case ID	108.08mm
Piston Bush ID	82.9mm

Measurements	
ITEM	SIZE
Standard hole size	137mm
A- Overall length (ex bit)	1292mm
B- Spanner flat (A/F)	102mm
C- Cylinder OD	124mm
Weight (approx ex bit)	67kgs

Warranty

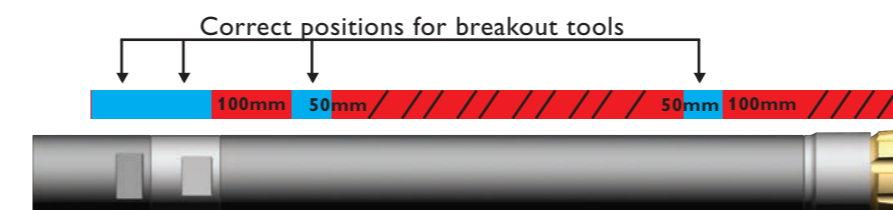
- Warranty is void if the maximum recommended air pressure is exceeded. Given flows are indicative only.
- Inadequate lubrication will damage the hammer and void the warranty.

Lubrication

Correct lubrication is critical to the performance and longevity of the hammer. Sandvik recommends:

- Oil Grade: SAE 320 Hammer Oil for most operating conditions
- Rate: 2 litres/ hour minimum via an automatic feeder
- Double the rate when injecting fluids such as water, foam & polymers
- Clean and relubricate the hammer each day after use to prevent corrosion and premature failure.

* Refer to the Operators manual for more detailed information.



Do not place/use breakout tools in red areas. Use a bit basket/breakout plate to breakout the bit. Incorrect breakout will void warranty

RE547

Parts and Owner's Manual

