

# Sandvik Drill Shack Heliportable

A safe workplace that protects the operators, the equipment, and the environment.

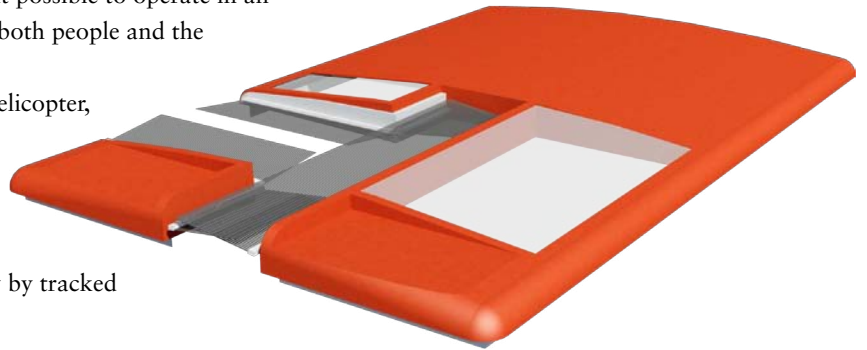


## The Sandvik technology and equipment for extracting samples of minerals are very well renowned, world wide.

Now it's time for a new decisive step, when Sandvik presents the new generation Drill Shack. This well thought-out solution makes it possible to operate in an arctic or sub-tropical climate, in a manner safe for both people and the environment.

The Sandvik Drill Shack can be transported by helicopter, when packed in compact units. When the modular drilling station has been disassembled at a previous site it is ready for quick and easy transportation to a new, exacting working environment.

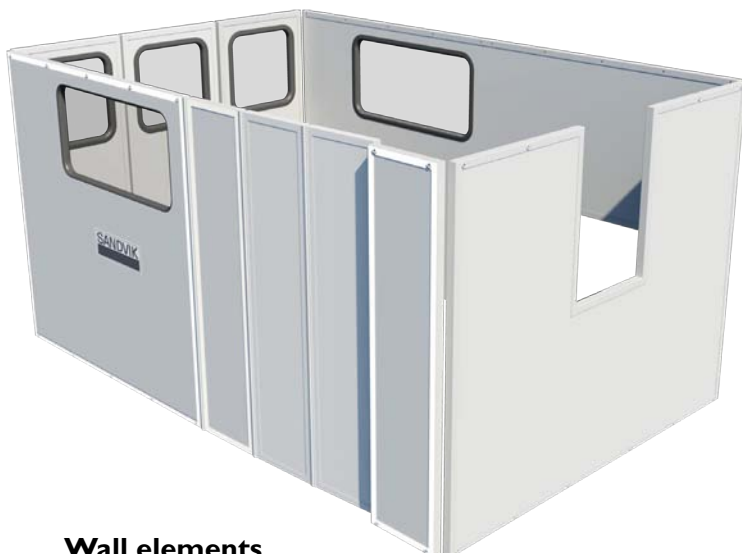
The station can also be transported in its entirety by tracked vehicles or mounted on a hook lift frame.



### Roof

The roof has the same structural design as the wall elements, giving superior strength, heat insulation, and sound-proofing. To minimize draft through the openings in the roof, they are equipped with brush strips. A mirror-inverted design makes it possible to change an element without stripping down the entire shack.

Two skylights compensate for the lack of visibility through the opening in the roof. Two non-slip service areas ensure a safe place for servicing the rig. A flexible solution is offered by making a part of the roof into a sliding roof with a brush strip attached to it.



### Wall elements

The wall elements are designed as a sandwich panel. Laminated glass windows make the environment more pleasant.

All corners and edges are reinforced with rails to enhance the strength of the panels as well as creating a safe and strong attachment point for the elements to the frame and the roof.

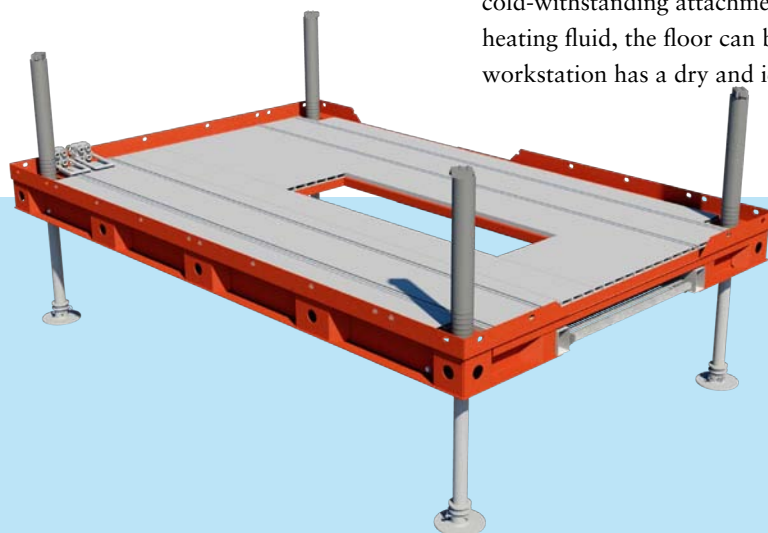
There are two doors; the main entrance with a window and a wide door for feeding pipes through.

### Frame

The frame is supported by legs that are assembled from the outside and can be easily removed. All hydraulics are located in the frame, meaning the floor remains free from hoses and oil leaks. The collapsible steps are mounted in a recess in the base frame. The steps are made to be non-slip.

The power pack and the shelf are assembled and connected using multi-line quick couplings accessible through a hatch/opening in the wall element.

The non-slip, aluminum floor is equipped with approved, cold-withstanding attachment rails. With built-in ducts for heating fluid, the floor can be kept heated. The operator workstation has a dry and ice-free surface.



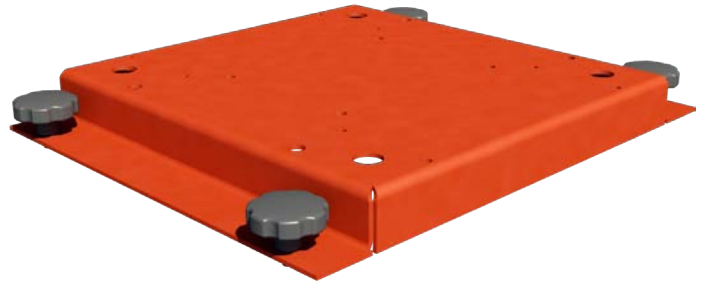
## Internal modules

All of the modules necessary when operating the drill shack are built on an identical platform. This is done to reduce the number of components. They are all fastened to the floor by T-rail nuts, thus making them easy to install, remove or replace if needed.



### Operators compartment

Walls made of durable sound proof material.  
Windows of shatterproof plastic.  
Sliding door.



### Carrying shelf

- Makes it possible to choose between different power packs. Makes it possible to carry the power pack together with the drill shack as one unit.

### Assembly design

- Exactly alike whether one time assembled or assembled in the field. Assembling begins with the frame onto which support legs, drill rig, internal modules, etc. are fitted.

### Casing

- Three vented hatches directed away from the shack. The hatches are fully demountable using quick release fasteners. The top of the casing is designed as a service platform.



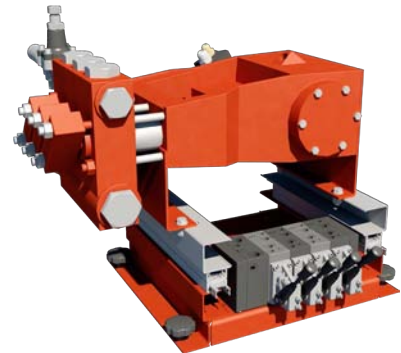
### Air conditioner

Powered by hydraulics.  
Replaces the heater module when used in tropical areas.



### Heating system

Withstands arctic, sub-zero temperatures. The floor, heater matrix, and power pack share the same coolant. Can be started by a phone call or a preset timer.



### Water pump

Easily accessible through the opening in the side of the station. The station can be adjusted using the valves under the water pump.



### Options

#### Storage cabinet

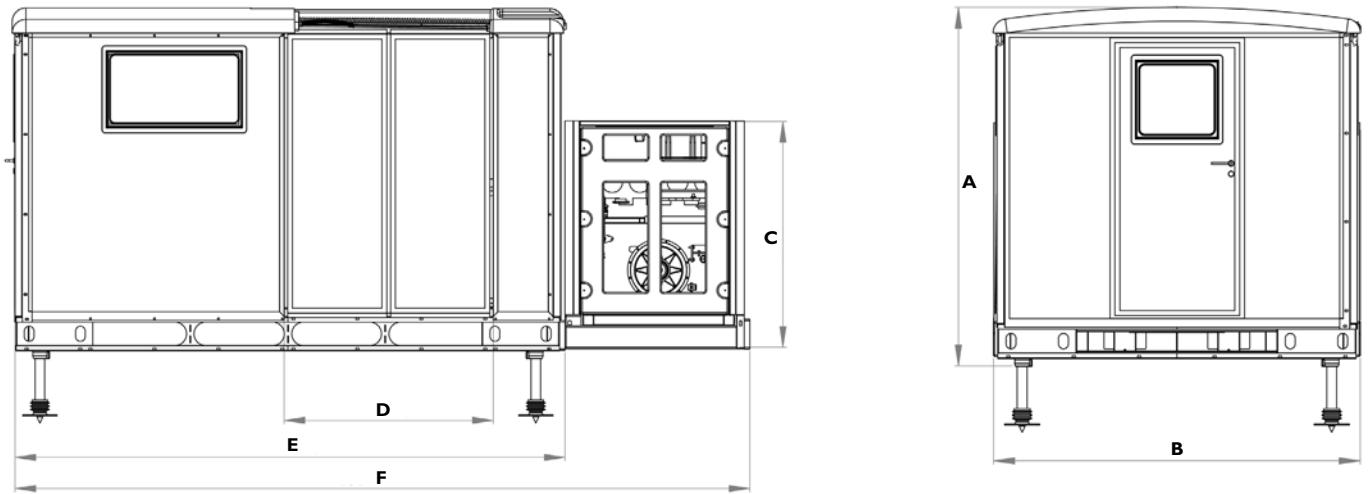
Cabinet's for coring bits, tools are available in different sizes and materials.



#### Drill pipe stand

Attached to the floor by T-rail nuts. Adjustable and easy to install and remove. Can handle drill pipes up to 6 meters. Fully collapsible during transport.

## Dimensions and weights



Dimensions	mm	ft	Weights	kgs	lbs
A	2539	8,3'	Weights for drill rig, water pump and power pack, not included		
B	2600	8,5'	Drill shack dry	2590	5700
C	1637	5,4'	Drill shack dry with shelf and sound proof hood for power pack	3200	7040
D	1517	5'	Drill shack fully equipped	4100	9020
E	3991	13,1'	Fully dismantled, no unit weigh's more than:	800	1760
F	5331	17,5'			

In addition to Sandvik Drill Shack, Sandvik also offers a wide range of diamond core drill rigs, reverse circulation drill rigs, tools and service for both surface and underground exploration.

