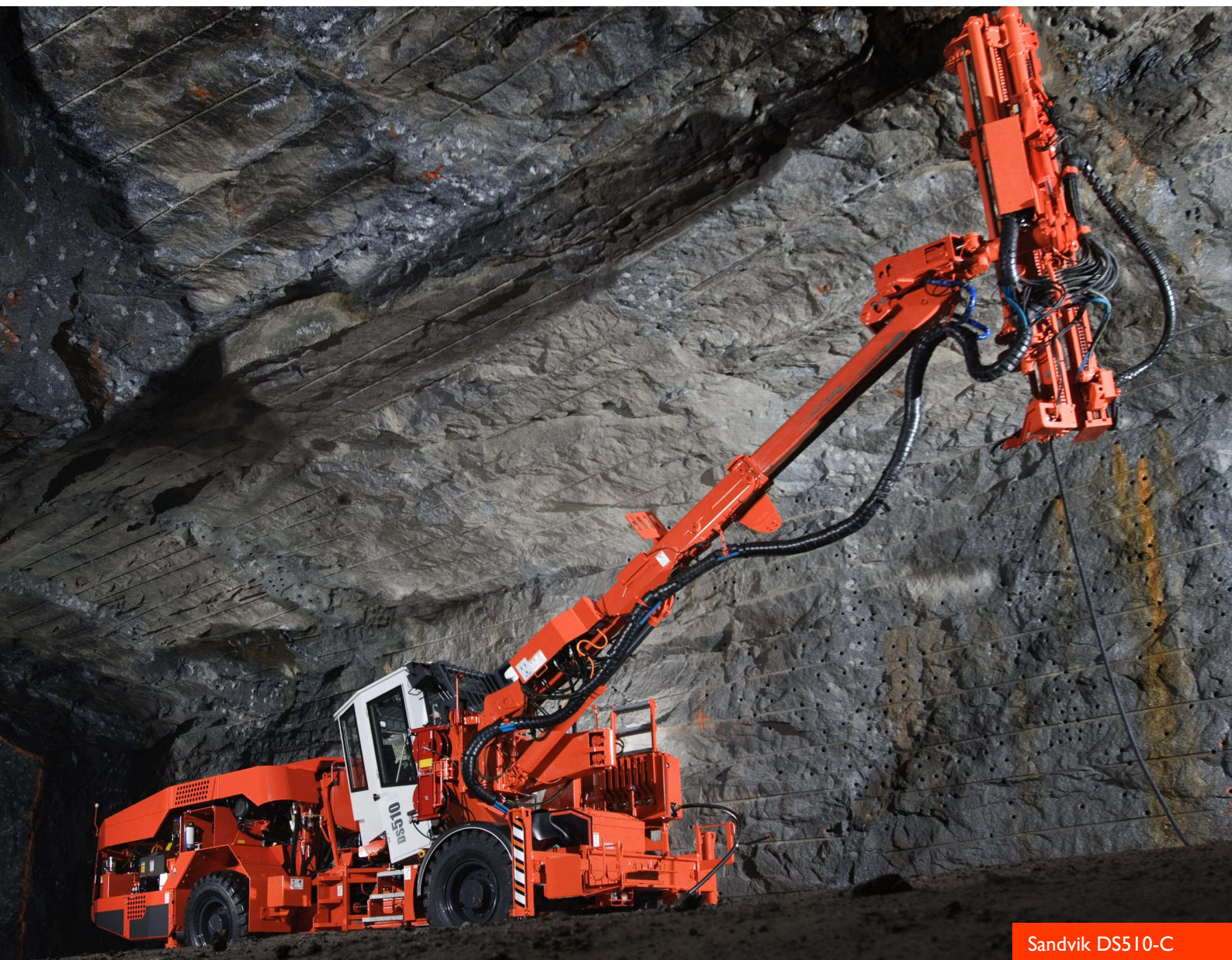


Sandvik DS510

Maximized safety



Sandvik DS510-C

Sandvik DS510 is the perfect tool to secure high drifts and tunnels, providing a safe working environment and a constant access to the work place. The versatile bolting head construction allows for the use of all common bolt types and combinations, with a bolt length up to 6 meters (20 ft) depending on the chosen bolting head alternative. The telescopic boom makes it possible to install several rows of bolts without moving the machine. An optional second boom – either a screen handler or a basket boom – increases the unit's capacity and versatility.

Added automatic functions allow the operator to concentrate on safe, fast and efficient rock reinforcement. Air-conditioned, soundproof, and tiltable cabin further promotes safety and lessens operator fatigue.

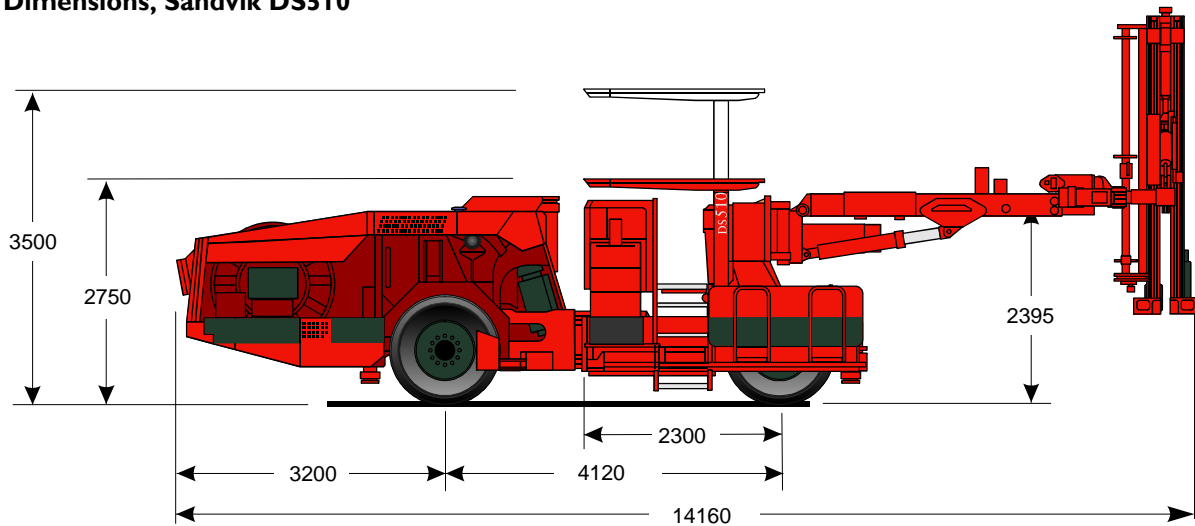
Unit availability is maximized through easy access to all service points. The high speed carrier in a fully equipped machine again cuts down transit times between headings, and maximizes effective working hours.

Available features

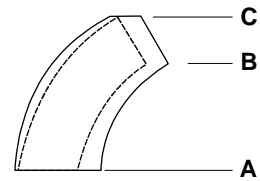
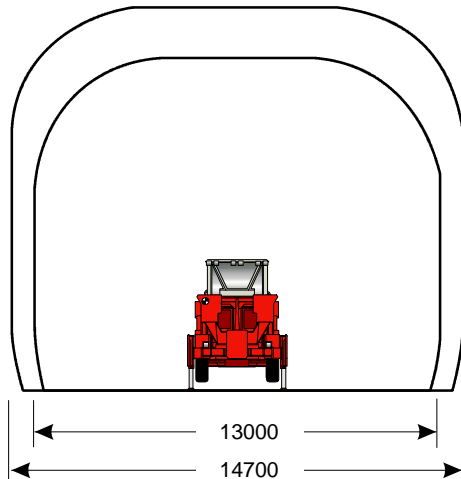
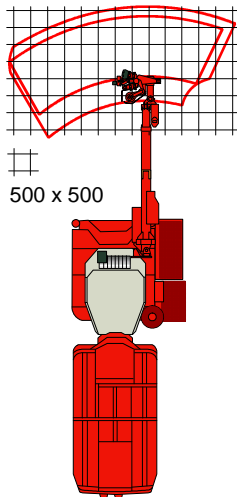
- Working height up to 12.4 meters
- Easy-to-fill bolt cassette for 8/12/15 +1 bolts
- Electric joystick controls for drilling and bolting functions
- Additional basket boom or meshing boom
- Optional high speed carrier with 170 kW diesel engine



Main Dimensions, Sandvik DS510



Bolting area, Sandvik DS510-C



Bolting Head	Bolt length	A	B	C
BH 24	1.5 – 2.4	3700	9200	10600
BH 27	1.5 – 2.7	4000	9200	10600
BH 30	1.5 – 3.0	4300	9200	10600
BH 40	2.5 – 4.0	5550	10000	11400
BH 50	4.0 – 5.0	6500	11000	12400
BH 60	4.0 – 6.0	7500	11000	12400

A = Minimum operating height
 B = Max. height with full bolting coverage
 C = Maximum height reached

Sandvik DS510 series products

Model	Drift size class height x width / m (ft)	Bolting Head	Max. height reached m (ft)	Bolt length m (ft)	Rock drill	Bolt type	Controls	Canopy / cabin
DS510	5 x 5 (16 x 16)	BH 24 – BH 60	10.6 (34.8) – 12.4 (40.7)	1.5 (5) – 6.0 (20)	HL 300 S HL 510 *)	Fixed bolt	Electric	Canopy
DS510-C	5 x 5 (16 x 16)	BH 24 – BH 60	10.6 (34.8) – 12.4 (40.7)	1.5 (5) – 6.0 (20)	HL 300 S HL 510 *)	Fixed bolt	Electric	Cabin

*) optional

