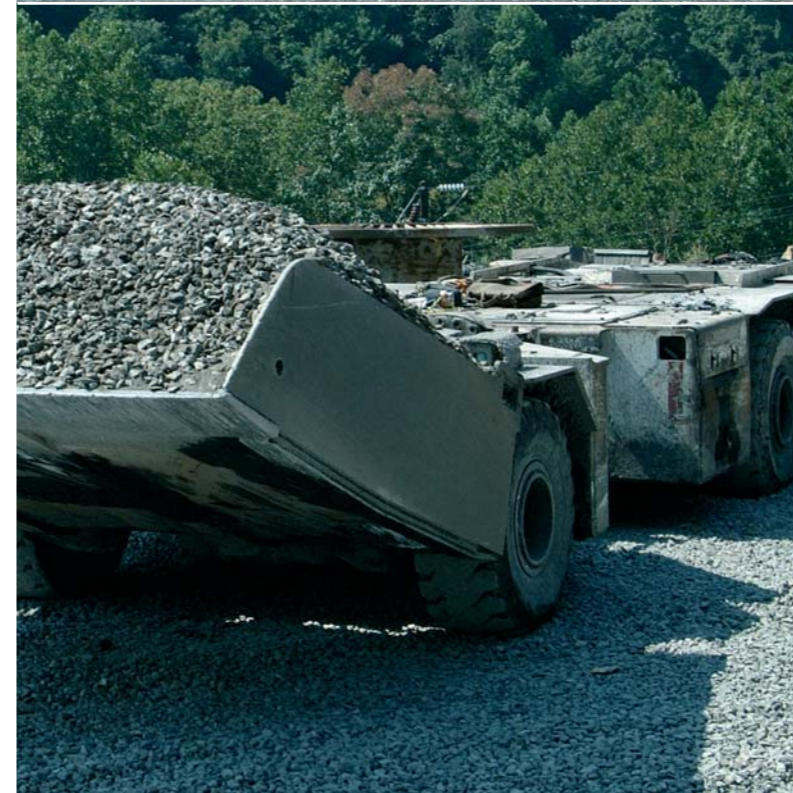
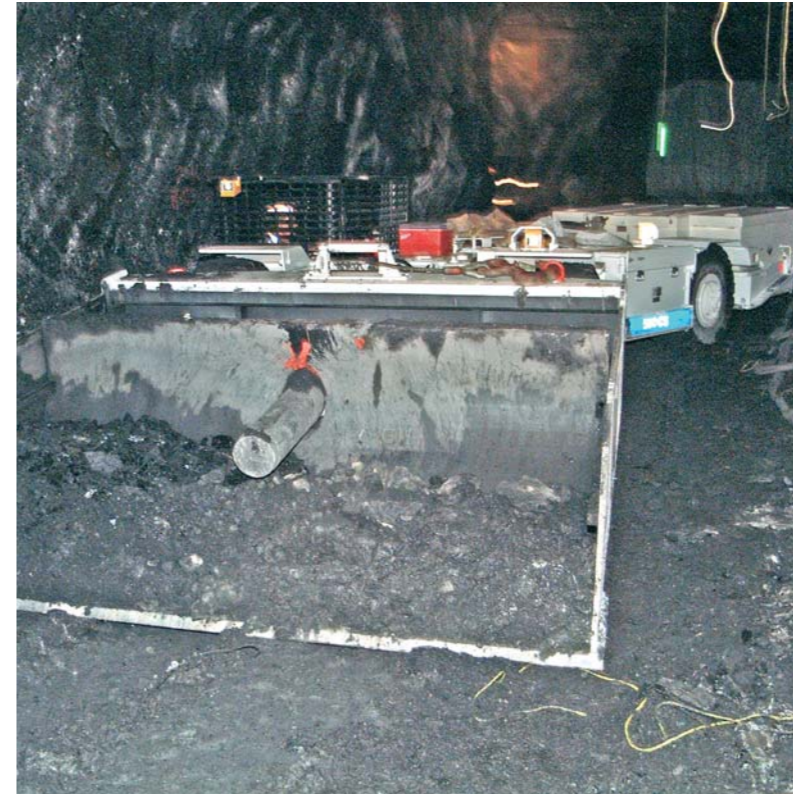


# Sandvik Coal Scoop LS280E in Action

18 ton capacity battery powered scoop





Sandvik Coal Scoop LS280



Maximum capacity

#### Features and Benefits

- Improved safety
- increased flexibility
- MSHA approved for all mining applications.
- Ergonomically designed operator compartment provides maximum operator comfort.
- Ball bearing center section provides long life, low maintenance operation in the most severe floor conditions.
- 2000 Amp IGBT traction controller with On-Board diagnostic display.
- Generous ground clearance with minimum tire size.
- John Deere axles with in-board planetary arrangement, fully enclosed wet disc brakes, On-demand 4-wheel drive differential lock, and 1-1/8" wheel studs.
- Spring Applied Hydraulic Released (SAHR) multi-disc park brake system.
- Ground based battery changing system



Sandvik Coal Scoop LS280

## Sandvik Coal Scoop LS280E

The Sandvik coal scoop LS280E is a battery-powered, articulated, low-profile, high-capacity machine for coal mines in which the layout and method of extraction call for the flexibility and versatility of rubber-tired vehicles.

#### Technical data LS280E\*

##### Capacities

Payload 16.4 tonnes 18.0 tons

##### Standard Bucket

Struck Capacity (SAE) 3.7 m<sup>3</sup> 4.8 yd<sup>3</sup>

##### Dimensions

Operating (Including Battery) 24100 kg 53000 lb  
 Total length (no battery) 9017 mm 355 "  
 Max. width 3004 mm 118 "  
 Height 994 mm 39 "

##### Weight

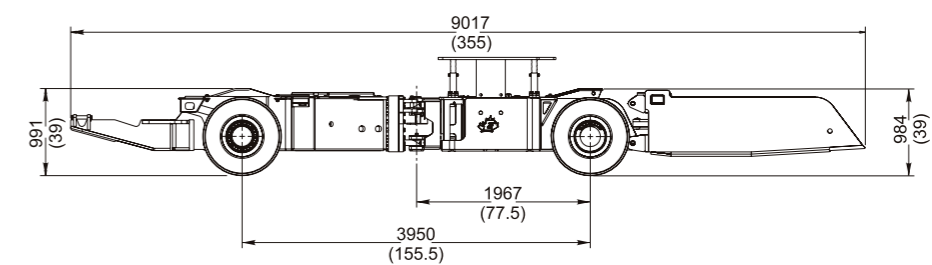
Operating (Including Battery) 24100 kg 53000 lb  
 Total loaded weight 40500 kg 89000 lb

##### Drive unit

Tramming speed 0–9.6 km/h 0–6 mph  
 Motors 36.8 kW 50 hp DC, MSHA approved

**Tyres:** 350/65 R15 Michelin XDM, Foam Filled

\* All rights for technical modification are reserved



TIRES SHOWN:	889 mm (35")
GROUND CLEARANCE:	254 mm (10")

